

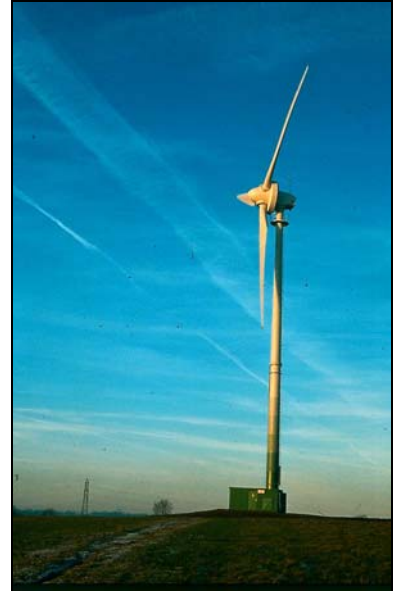
# ecotricity

## Lynch Knoll, Gloucestershire

The Lynch Knoll wind turbine was the first wind project built by Ecotricity. At the time it demonstrated the world's leading direct drive, variable speed wind technology.

The existing wind turbine was installed at Lynch Knoll Wind Park in December 1996 and provides enough electricity to supply around 1% of Stroud District's domestic electricity requirements.

More than half the land in Stroud District lies within the Cotswold's Area of Outstanding Natural Beauty (AONB). Lynch Knoll lies on the edge of a less scenic area of the Cotswolds AONB and with an adequate wind resource and an economic grid connection, it makes an excellent site for wind development.



### Project Details

Site address: **Lynch Knoll Wind Park, Tinkley Lane, near Nympsfield, Gloucestershire**  
Installed: **December 1996**  
Turbines: **1**  
Capacity: **500kW**

### Annual electricity output

Generation: **over 1 million units each year**  
Equivalent to: **400 homes**  
Blade rotation: **18 – 38rpm (depending on wind speed)**

### Turbine Dimensions

Hub height: **42m**  
Rotor diameter: **40m**  
Blade length: **19m**

### Annual emissions savings

Carbon dioxide (CO<sub>2</sub>): **946 tonnes**  
Sulphur dioxide (SO<sub>2</sub>): **11 tonnes**  
Nitrogen oxide (NO<sub>x</sub>): **3 tonnes**